



TENDER AND TRANSFER SERVICES

DUTCH & FLEMISH NORTHSEA



ABOUT US

Boluda Tender & Transfer Services Rotterdam has been established in 2023.

We offer customers an additional maritime solution for the transfer of marine supplies, parts, and persons, from our base in the Port of Rotterdam to anchorage areas on the Dutch & Flemish North Sea or vice versa.

Boluda Tender & Transfer services is part of Boluda Towage, a family-owned company and a global leader in maritime service, providing tailored towage services to its valued customers in main ports across the globe, on the continents of Europe, Asia, Africa, and Latin America.

boluda.eu

TENDER AND TRANSFER SERVICES

The Dutch & Flemish North Sea hold no secret to our highly-skilled and experienced crew.

Thanks to their experience in offshore towage and deep sea towage, our crew is able to sail to any anchorage.

We provide additional services, e.g. anchor recovery and return to sea, and anchor and chain repair.

Boluda will not charge overtime during night hours, weekends, and holidays.

Standard arrival and departure address:



Scheurhaven, Harbour nr. 5393
Rozenburg (Rotterdam), the Netherlands

Anchor areas Dutch & Flemish North Sea

Rotterdam Areas

- 1 DW No 1 (Long Term)
- 2 DW No 2 (Long Term)
- 3 E Anchorage 3 East (LNG)
- 3 S Anchorage 3 South
- 3 N Anchorage 3 North
- 4 W Anchorage 4 West
- 4 E Anchorage 4 East
- 5 Anchorage 5

Amsterdam / IJmuiden Areas

- 6 Anchorage 6
- 7 Anchorage 7
- 8 Anchorage 8

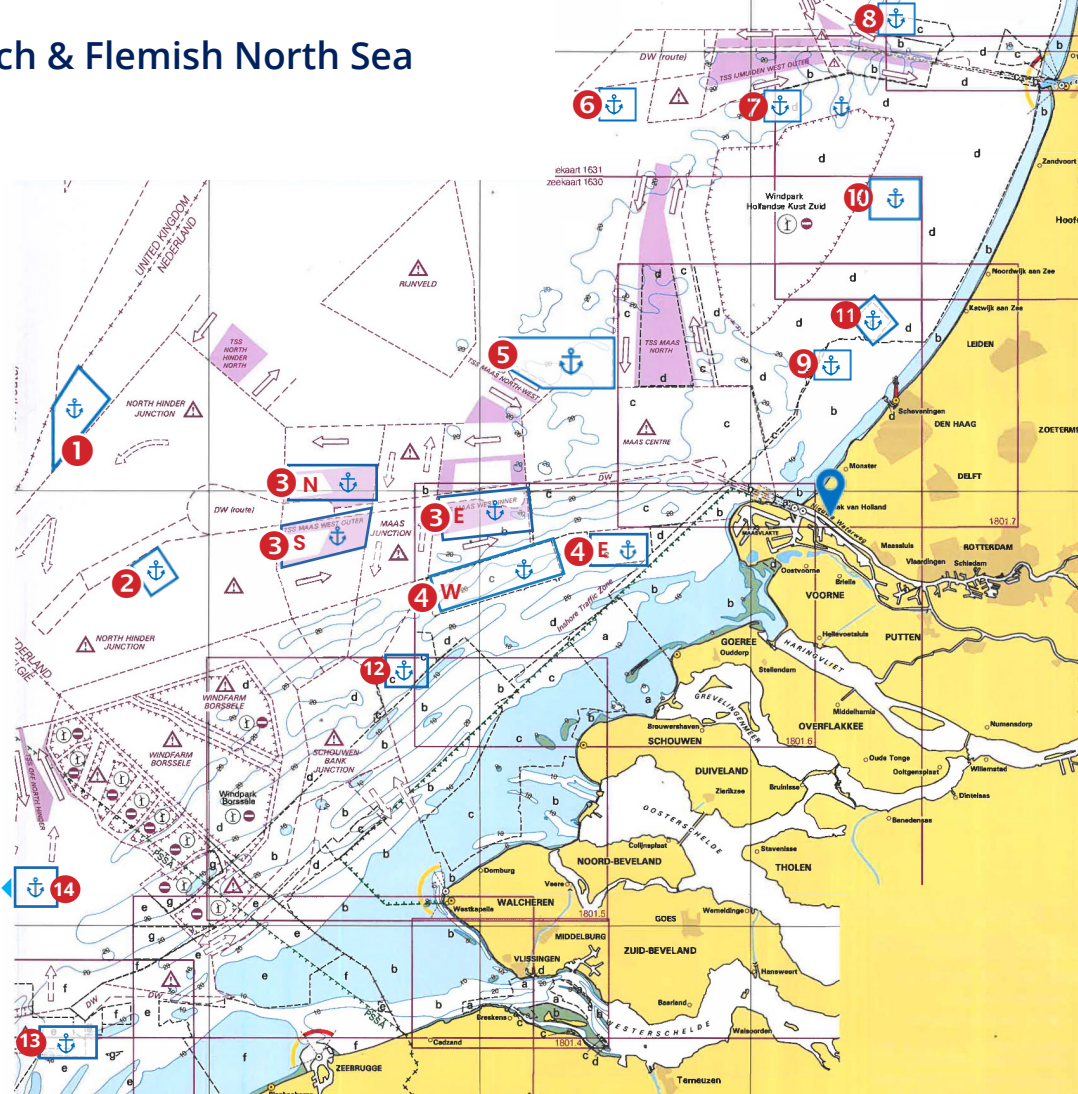
Scheveningen Areas

- 9 Houtrust buoy
- 10 Scheveningen Anchorage 1
- 11 Scheveningen Anchorage 2

Scheldt (Flushing/Antwerp)

- 12 Schouwenbank
- 13 Wandelaar
- 14 Westhinder

 Home base
Scheurhaven RTM



LET'S KEEP IN TOUCH

Boluda Towage Rotterdam BV

Havenstraat 30, 3115 HD Schiedam, Netherlands



Commerce +31 10 30 73 503

24/7 Dispatch +31 10 30 73 555



commercial.rtm@boluda.eu

Scan and check out the tariffs

